



SlipStream SP V4.0 - Release Notes

SlipStream SP is the defacto standard in web and email acceleration, used by over 1000 ISPs around the world. SlipStream applies patented, proprietary compression technology and optimization techniques to accelerate access to the Internet, email and FTP by up to 6X. As the fastest, most flexible and most reliable accelerator available, SlipStream SP delivers a more fulfilling online experience to dial, wireless and high speed 'lite' subscribers. SlipStream SP enables Service Providers to quickly and easily deploy a value-added service that will reduce subscriber churn and increase profits.

SlipStream SP Version 4.0 builds on the superior performance, flexibility and stability of SlipStream SP 3.2 by introducing a number of new features, enhancements and performance improvements to the core SlipStream engine.

SlipStream SP Version 4.0 Improvements (more details below):

- Performance Enhancements
- SlipStream Browser Toolbar
- IMAP (Email) Acceleration
- Enhanced Client 'Look and Feel'
- Integration with Opera, FireFox and Mozilla Browsers
- SlipStream Privacy Manager
- FTP (Passive) Acceleration
- High Speed By-Pass
- Auto Connection Recovery
- Geographic Load Balancing
- Easy Server Installation
- Server Management Console
- Enhanced Diagnostics
- RADIUS Fail-Open

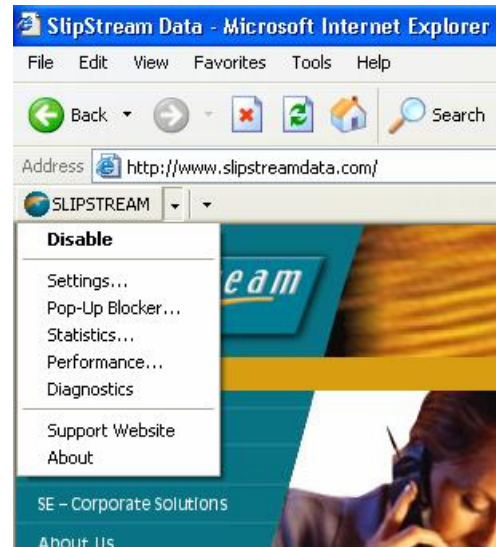
Performance Enhancements

Optimization changes to SlipStream's core acceleration technology have resulted in a 20% improvement in web-browsing performance (both in first-time and subsequent web-page accesses). This revolutionary improvement increases SlipStream's lead over the competition and enables our ISPs partners to deliver the fastest Internet experience.

We've always been the fastest... and now we're even faster!

SlipStream Browser Toolbar

The SlipStream Toolbar for Internet Explorer provides an alternate method to control and configure the SlipStream SP Client, as opposed to a system-tray icon. The SlipStream Toolbar is a visual tool that is convenient and easy-to-use and supports users' predisposed preference for toolbars over bottom tray icons. This feature delivers a competitive advantage to our ISP partners as it is not currently offered by any of our major competitors.



IMAP (Email) Acceleration

Based on ongoing customer demand, SlipStream is introducing IMAP email acceleration (including attachments) with Version 4.0. Our previous version, and most competitive accelerators, supported SMTP and POP3 email protocols. Since IMAP is commonly deployed in enterprise email systems, IMAP acceleration allows our ISP partners to service a greater number of corporations by providing end-users with faster remote access to their office email.

Enhanced Client 'Look and Feel'

The SlipStream SP Client GUI (graphical user interface) now takes full advantage of "XP themes", displaying Windows XP 'look and feel' in all SlipStream dialog boxes. End-users need to have Microsoft Windows XP operating system installed on their machines with "XP themes" in order to take advantage of this feature, which is another way for ISPs to enhance their subscribers' Internet experience.

Integration with Opera, FireFox and Mozilla Browsers

The ability of the SlipStream SP Client to seamlessly integrate with popular web browsers, such as Internet Explorer has been extended to include the following web browsers, which are rapidly growing in popularity:

- Opera Desktop 8.0
- FireFox 1.0
- Mozilla 1.7.3



Subscribers with these browsers will now enjoy the same functionality as Internet Explorer and Netscape, including:

- Automatic configuration of proxy settings when SlipStream Acceleration is enabled.
- Automatic clearing of proxy settings when SlipStream Acceleration is disabled.
- Ability to right-click on an image and fetch the original quality.
- Integrated proxy exclusion list, disabling acceleration for requests to the listed sites.

SlipStream SP Clients currently support all browsers on the market, including the ones listed above, with manual proxy settings. This ability allows your subscribers to use their browser of choice and still take advantage of your acceleration service. This allows you to better meet the evolving needs of your existing subscribers and expand your customer base.

SlipStream Privacy Manager

The SlipStream Privacy Manager offers two benefits to your end-users:

- The SlipStream Privacy Manager protects user privacy by disguising the source IP address of all outbound HTTP requests sent through SlipStream. Service Providers still have the ability to retrieve the user IP address, if required, for security and law-enforcement purposes.
- The SlipStream Privacy Manager provides end-users an easy way to delete Internet Cookies, History, Cache and Temporary Files right from the SlipStream Client.



Note: Privacy Managers are known by many popular names in different parts of the world, such as Privacy Protector, History and Evidence Eraser, History and Evidence Eliminator, Cookie and Cache Cleaner, etc.

FTP (Passive) Acceleration

SlipStream SP Version 4.0 has the ability to accelerate Passive FTP (the most common type of FTP). Both FTP uploads and downloads will be accelerated. Users with slower connections stand to gain the most from this time saving feature. By expanding the types of content that will get accelerated, Version 4.0 further enhances your service offering and the Internet experience for your subscribers.

High Speed By-Pass

Based on testing, SlipStream has determined that benefits of compression-acceleration techniques may not appear as significant on under-utilized high speed connections. In some situations, gain in performance at very high speeds could even be eroded by the overhead of connecting and utilizing the acceleration server. The SlipStream SP Version 4.0 Client has the ability to disable itself automatically if the underlying connection bandwidth is greater than a configurable threshold. Therefore, acceleration is turned on only when it is needed on low speed connections and is disabled on high speed connections.

Auto Connection Recovery

The Auto Connection Recovery feature is vital to end-users with cellular (mobile) connections. Loss of connection due to a weak signal or dead zone is one of the common problems faced by cellular/mobile users today. With this new feature, if a cellular network connection is lost during a session, the SlipStream SP Client will display a “No Connection Status” and then resume automatically when the underlying wireless connection becomes available - there is no need to restart manually. This feature improves SlipStream SP’s ease-of-use and competitiveness in the wireless/cellular markets.

Geographic Load Balancing

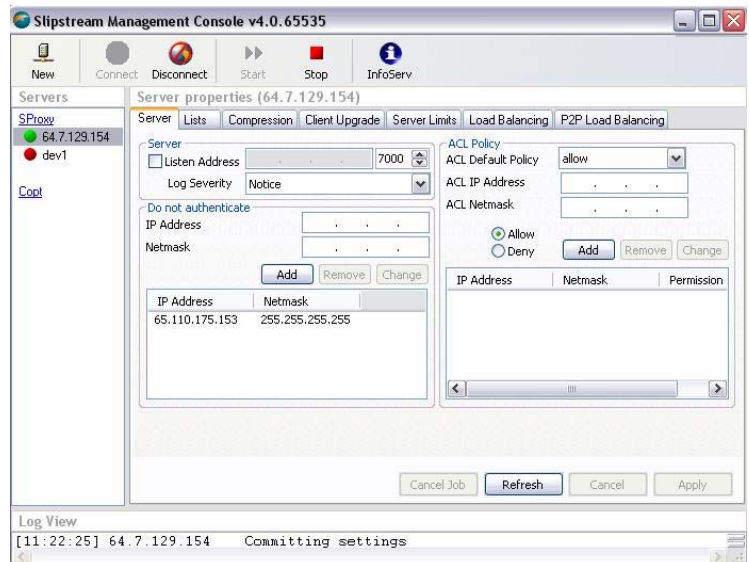
SlipStream Servers can now be configured with geographic load balancing. This facilitates load-balancing and redundancy across geographically dispersed data-centers/POPs, and also allows SlipStream SP clients to connect to the closest cluster of SlipStream Servers. This enhancement significantly improves the load balancing and fault tolerance ability of SlipStream Servers, which ensures optimal service delivery.

Easy Server Installation

In response to popular demand from our customers, Version 4.0 now allows a quick and easy installation of the SlipStream SP server software from a CD, employing an automated process with instructions and prompts for key inputs. Server configuration has been greatly simplified and the entire task can be completed in less than an hour. There is no need for a high level of expertise in Linux in order to install and configure the SlipStream Server. With this enhancement, our ISP partners will reduce costs and benefit from the reduced time to launch products/services.

Server Management Console

SlipStream offers a Windows-based Management Console with Version 4.0, allowing system administrators to monitor, configure, administer and manage SlipStream servers and software upgrades remotely, from the convenience of their desktops. The Management Console also includes the same functionality as the SlipStream Infoserver (offered in the previous versions) for collection and reporting of user stats and billing information. SlipStream will continue to offer the older Infoserver capability for a period of time (for an easy migration of existing monitoring/billing processes). This enhancement significantly simplifies server management and configuration.



Enhanced Client Diagnostics

Client Diagnostics reporting has been simplified and made more user-friendly. Results from specific diagnostics tests are clearly displayed to the end-user. A user-friendly dialog box displays diagnostics test results via easy to grasp status indicators (green circle - good/running, yellow triangle with an exclamation mark - problem/trouble). If there is a problem, the user can email the underlying detailed diagnostics report to their ISP help desks by clicking on the 'Create Report' button. Detailed instructions on how to email a complete Diagnostics log to the ISP's support desk are also provided. These enhancements are not offered by any of our major competitors.

RADIUS Fail-Open

The RADIUS Fail-Open feature allows SlipStream SP Clients to successfully connect to the SlipStream Server even if the authentication transaction (with the RADIUS server) fails to complete. Thus, all connection requests are considered as authorized in the mean time until the authentication system comes back on, ensuring uninterrupted service to the end-users. This configurable option will improve the uptime of the acceleration service (since a RADIUS server outage does not impact the SlipStream SP Client).

A better Internet experience for all of your subscribers!

With SlipStream SP Version 4.0, your subscribers will experience the following benefits:

- Faster Performance
- Improved Ease-of-Use - through enhancements such as the SlipStream Toolbar
- Enjoyable Experience - providing users the ability to add "XP themes" through enhanced GUI
- Expanded Compatibility - including IMAP & FTP Acceleration and Integration with Multiple Web Browsers
- Privacy Protection - with the SlipStream Privacy Manager
- Even More Reliability - through features such as High Speed By-pass, Auto Connection Recovery, and Geographic Load Balancing and RADIUS Fail-Open
- More Efficient Support - through Enhanced Diagnostics

In summary, SlipStream SP Version 4.0 will enable you to deliver a better Internet experience to your subscribers, which in turn reduces churn and increases your profits



sales@slipstream.com
519-886-6738
www.slipstream.com

