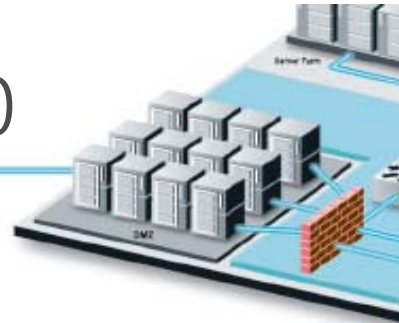


Ubigate™ iBG1000



With full routing capabilities, enterprise-class switching capacity, VoIP, and integrated security, the Samsung Ubigate™ iBG Series Convergence Platform replaces a multitude of special-purpose network devices delivering an agile and efficient network infrastructure. The Ubigate™ iBG Series enables true enterprise voice and data convergence through a wide range of QoS features supporting both analog and IP phones. With a wide range of features and network interfaces supported in the Ubigate™ iBG Series, enterprise customers can meet today's business needs and be confident that they can meet tomorrow's without 'forklift' replacement of current equipment. The Ubigate™ iBG Series includes fixed-configuration iBG1000 and modular iBG2000/3000 Series. The Ubigate™ iBG1000 is designed for cost-effective WAN access. Whether your organization requires support for VoIP or mission-critical applications or just additional bandwidth, Ubigate™ iBG1000 can meet the challenge.



- **Advanced routing and security in one platform**
- **Highest performance in its class**
 - 150Kpps forwarding performance
 - Supports wire-speed for 4 T1 even with Security, NAT/Firewall, and QoS Services enabled
- **Scalable Bandwidth**
 - Efficient multi-link bonding up to 4 T1 (6Mbps) or 4 E1 (8Mbps)
- **Security functions for protection from internal and external threats**
 - Stateful Firewall, H/W Accelerated IPSec VPN
 - DoS Defense Engine
 - SIP ALG, Web ALG
- **Advanced QoS**
 - Auto QoS, CBQ, Inter PVC QoS, Bandwidth Guarantee

Simplified and Cost-Effective Installation, Operation and Maintenance

Integration of routing, QoS, and security into one platform simplifies network maintenance and management by minimizing the number of hardware units from different vendors in the network. By providing simplified management, you can lower administrative burden and effectively reduce total network cost of ownership, while increasing your ROI.

Comprehensive Security

The Ubigate™ iBG1000 delivers maximum security for enterprises. Integrated stateful firewall, ALGs, DoS defense engine, and hardware accelerated IPSec VPN offer the most comprehensive security protection.

Advanced QoS Features

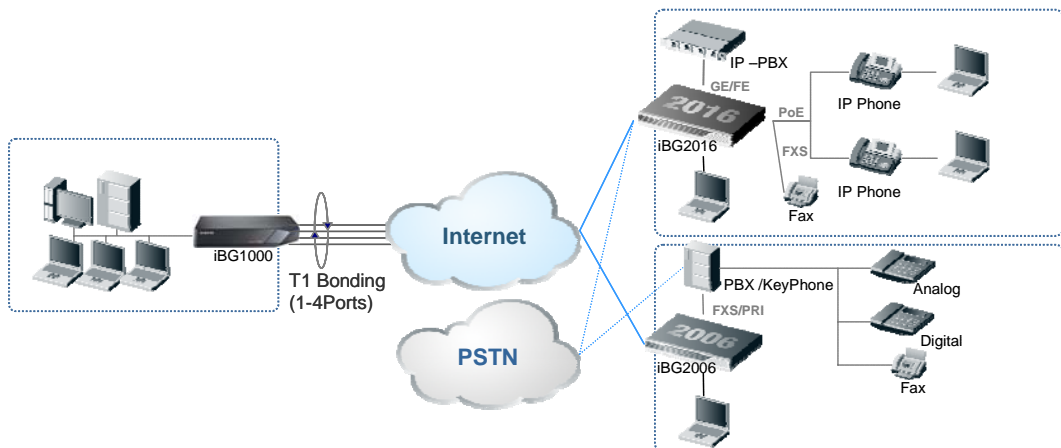
The Ubigate™ iBG1000 delivers flexible, business-class QoS features for mission-critical services such as IP telephony. Particularly, the Ubigate™ iBG1000 can virtually separate voice and data traffic so that it can provide maximum protection for voice traffic.

High Availability

High availability hardware and software features mean that the Ubigate™ iBG1000 accelerates business productivity. The Ubigate™ iBG1000 secures network availability and reduces network downtime with the help of Virtual Router Redundancy Protocol (VRRP) and T1/E1 Bonding which provides protection against individual circuit failure.

Price and Performance

The Ubigate™ iBG1000 sets industry-leading price/performance benchmarks for enterprise networking. The platform's routing, QoS, and security functions deliver a significant price/performance advantage over competitive products.



Ubigate iBG1000 Deployment with T1 multi-link bonding

Ubigate™ iBG Series Convergence Platform

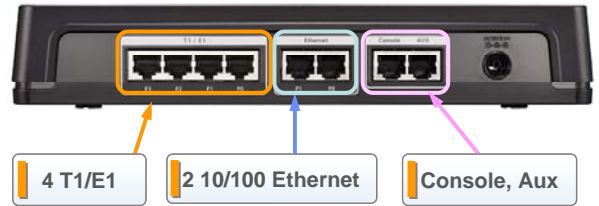
Transform Your Network
Experience
the Power of Ubigate™



LEDs
• System / Ports Status

LED
• Power

Ubigate iBG1000 Front View



4 T1/E1

2 10/100 Ethernet

Console, Aux

Ubigate iBG1000 Rear View

Hardware Specifications

| | | |
|-----------------|---|---|
| Platform | Form Factor | Desktop, Wall-Mount |
| | Processor | 400 MHz |
| | DRAM (Default / Max) | 512M / 1G |
| | Flash (Default / Max) | 1GB / 2GB |
| | Number of Console Ports | 1 |
| | Number of Aux Ports | 1 |
| | Number of Fixed 10/100BASE-T Ethernet Ports | 2 |
| | Number of T1/E1 Ports | 4 |
| Physical | Power Supply | External Adapter |
| | Weight | 1.69 lbs (0.77Kg), Package 4.3 lbs (1.95Kg) |
| | Height | 1.77inch (4.5cm) |
| | Width | 10.24inch (26.0cm) |
| | Depth | 7.48 inch (19.0cm) |

Router Specifications

| | |
|-------------------------------|---|
| Forwarding Performance | 150 Kpps |
| WAN Protocols | ISDN PRI, HDLC, FR/MLFR, PPP/MLPPP, PPP/MLPPP over ISDN PRI, FR Congestion Management and Traffic Policing, DDR (Dial-on Demand Routing), PPP over Ethernet, PPP over FR, MLPPP over FR, PPP over MFR |
| Layer 2 Protocols | VLAN (802.1q) |
| Routing Protocols | Static Routing, OSPF v1/v2, RIP v1/v2, IGMP v1/v2/v3, PIM-SM, DVMRP, PIM-SSM, VRRP, Policy-Based Forwarding/Routing |
| QoS | DiffServ, Classification (5-tuple), Marker/Meter (srTCM/trTCM), Policing/Shaping, Queuing (CBQ, PQ), Congestion Avoidance (WRED), Bandwidth Guarantee, Auto QoS, LF&I, Mapping of IP QoS to Frame Relay, QoS for FR PVC |
| AAA | 802.1x, RADIUS, TACACS+ |
| Load Balancing | Per Flow (ECMP) Per Packet |
| Management | SNMP v1/v2/v3, CLI, Telnet, SNTF, TFTP, DHCP, SSHv2, Web-based Device Manager, MIBs, Syslog, Diagnostic |

Security Specifications

| | |
|-----------------|--|
| Firewall | <ul style="list-style-type: none"> •Stateful Packet Inspection •NAT (Static, Dynamic, PAT) •SIP ALG, Web ALG •Application Content filtering <ul style="list-style-type: none"> - Block Java based on extension - Block URLs based on file extensions - Block ActiveX based on file extensions - FTP's protocol command Filtering - SMTP's protocol command Filtering •Cyber Defense Engine <ul style="list-style-type: none"> - Dos/DDoS, IP Spoofing, IP/TCP fragment attack protection (Protection for 60+ attacks) •Scheduling •URL Filtering •Rate limiting <ol style="list-style-type: none"> 1.Maximum connections per policy basis 2.Connection creation rate per policy basis 3.Bandwidth per policy basis |
| VPN | <ul style="list-style-type: none"> •HW acceleration •IPSec for Site to Site, Remote Access •IPSec <ul style="list-style-type: none"> - Protocols: ESP, AH, AH over ESP - Encryption: DES-CBC, 3DES-CBC, AES-CBC(128, 192, 256) - Hashing: HMAC-SHA1, HMAC-MD5 - Modes: Tunnel, Transport, Config Mode •IKE <ul style="list-style-type: none"> - Authentication: Preshared, RSA/DSA Signatures, Xauth - Modes: Main, Aggressive, Quick - Diffie-Hellman Group: Group 1 (MODP 768), 2 (MODP 1024), 5 (MODP 1536) - Encryption: DES, 3DES, AES (128,192,256) - Hash: SHA1, MD5 •L2TP, GRE •PKI Support (SCEP, Manual, CRL, OCSP) •IPSec NAT Traversal |

Specifications are subject to change without prior notice

www.samsungNetwork.com

E-mail : asiasales@samsung.com

europesales@samsung.com

americasales@samsung.com



SAMSUNG ELECTRONICS CO., LTD.